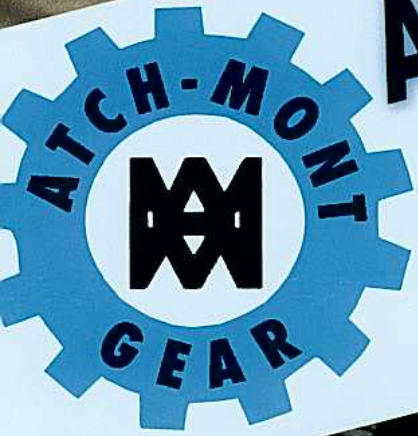




# ATCH-MONT GEAR CO., INC



- CUSTOM MADE GEARS •
- GEAR BOX REBUILDING •
- CUSTOM MACHINE WORK •



## **WE MANUFACTURE:**

- SPURS
- HELICALS
- BEVELS
- HERRINGBONES
- SPLINES
- SPROCKETS
- RACKS
- INTERNALS
- EXTERNALS
- ENGINEERING SERVICES
- EMERGENCY BREAKDOWNS
- METRIC & STANDARD
- WORMS & WORM GEARS



## **APPLICATIONS:**

- COAL HANDLING & GRINDING
- COOLING TOWERS
- STEAM TURBINES
- EXCITER REDUCERS
- MIXERS / AGITATORS
- EXTRUDERS
- STEEL PROCESSING
- PUMPS
- COMPRESSORS
- CONVEYORS
- BRIDGE MACHINERY
- CUSTOM DRIVES

## **ENCLOSED DRIVE REPAIRS AND UPGRADES FOR GEARED SPEED REDUCERS AND EQUIPMENT MANUFACTURED BY THESE O.E.M.'S**

- |             |                     |                       |
|-------------|---------------------|-----------------------|
| • B&W       | • FLENDER           | • NUTTALL             |
| • BROWNING  | • FOOTE JONES       | • PHILADELPHIA GEAR   |
| • CLEVELAND | • GENERAL ELECTRIC  | • PHILADELPHIA MIXERS |
| • DODGE     | • HANSEN            | • SANTASALO           |
| • ECODYNE   | • HORSBURGH & SCOTT | • TERRY               |
| • ELLIOTT   | • D.O. JAMES        | • WESTERN             |
| • FALK      | • LINK BELT         | • WESTINGHOUSE        |
| • FARRELL   | • LUFKIN            | • CUSTOM & OBSOLETE   |

**WE'RE IN THE RIGHT GEAR FOR THE FUTURE**

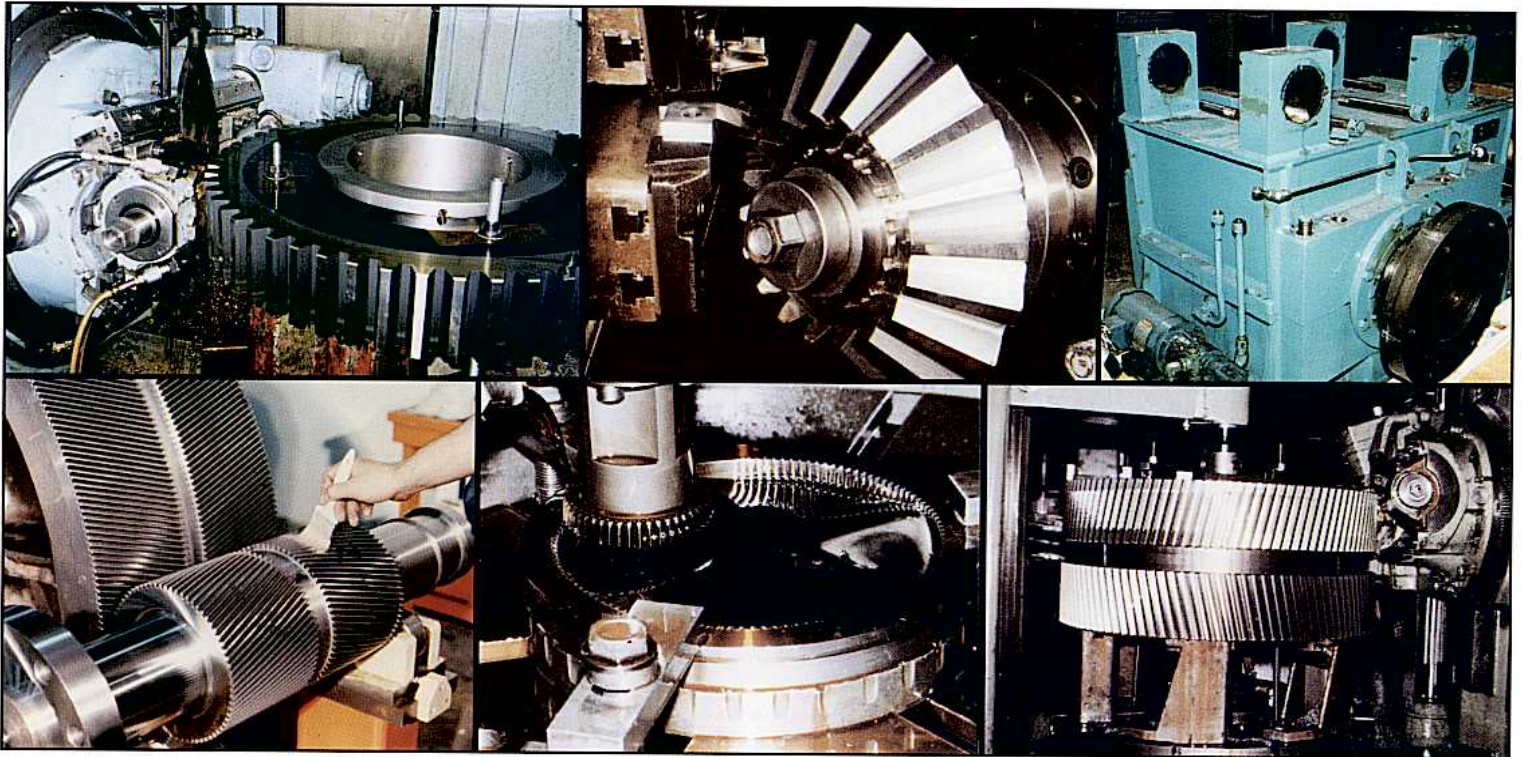
**HOW ABOUT YOU??**

**CALL US, VISIT OUR SITE, OR SCHEDULE A PLANT TOUR.**



# ATCH-MONT GEAR CO., INC.

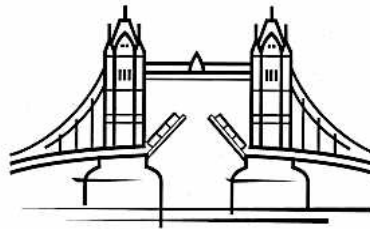
ATCH-MONT Gear Co., Inc., founded in 1972, can trace its roots to the turn of the century. ATCH-MONT Gear is related to most of the major gear companies that have existed in the Philadelphia region and Delaware Valley. Though most of those other companies are no longer in business, ATCH-MONT Gear, because of our philosophy of quality at a fair price, coupled with our personal service, continues to thrive and grow. Constantly upgrading our equipment and implementing new techniques and technologies, ATCH-MONT Gear is capable of satisfying your requirements. ATCH-MONT Gear manufactures a wide range of gears from prototype to production runs and offers unparalleled emergency services to meet your delivery requirements and specifications.



- Anti-Backlash Gears
- Cluster Gears
- Custom Gears
- Cut-Teeth-Only
- Fine Pitch Gears
- Fly Wheels
- Heat Treated Gears
- Involute Splines
- Large Gears
- Made-To-Order Gears
- Metric Gears
- Module Gears
- Non-Circular Gears
- Non-Metallic Gears
- Planetary Gears



- Pulleys
- Rack & Pinions
- Ratchets
- Sectors
- Segments
- Serrations
- Special Gears
- Specialty Materials
- Splined Shafts
- Splines
- Sprockets
- Standard Gears
- Synchronous Pulleys
- Timing Pulley
- Worms/Worm Gears





# ATCH-MONT GEAR CO., INC.

## ☆☆☆ SERVICE ☆☆☆

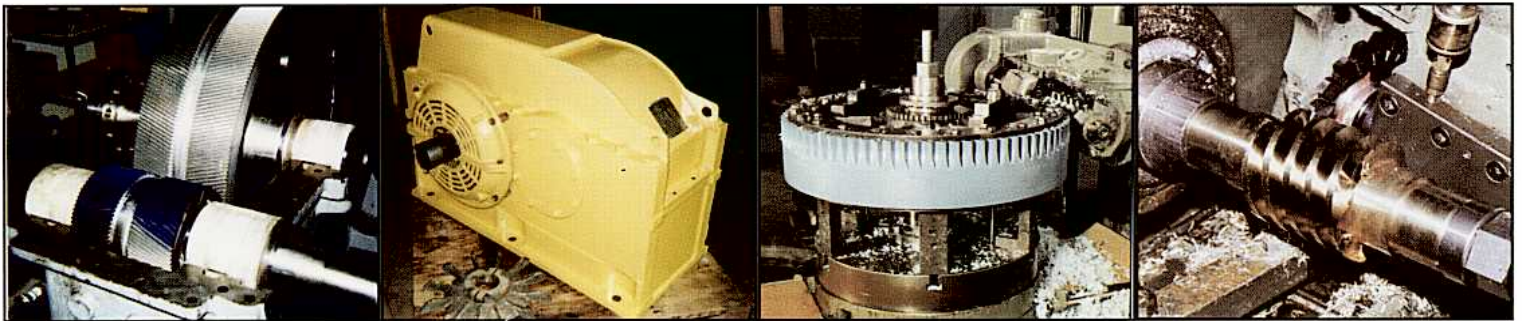
- Personal attention to project details & your specific requirements
- Scheduling flexibility to meet any deadline
- Machine shop *and* gear manufacturing facilities located under one roof in addition to our equipment evaluation / repair and testing resources
- 24-hour *in-house* BREAKDOWN SERVICES
- Overnight and same-day servicing capability wherever possible
- Major emphasis on final product quality

## ☆☆☆ SUPPORT ☆☆☆

- Vast knowledge of gear industry to bring economical solutions to your needs
- Considerable range of standard & metric tooling
- Over 80 years of combined engineering experience in a wide range of technologies
- Custom reproductions from samples, drawings or specifications
- Talented craftsmen skilled in gear industry techniques
- Reliable relationships with local industrial base to support our need for any outside services such as heat treating, plating, etc.

## ☆☆☆ SPECIALTY ☆☆☆

- One-of-a-kind replacements that even O.E.M.'s no longer support
- Knowledge of vintage equipment and components still in use in major industry today
- We can even adapt existing components to provide new useful service



GEAR UP FOR  YOUR FUTURE

65 Industrial Drive • Northampton Industrial Park • Ivyland, PA 18974  
215.355.5146 • Toll-Free: 888.505.2163 • Fax: 215.355.3570  
Web: [www.atchmontgear.com](http://www.atchmontgear.com) • E-mail: [atchmont@atchmontgear.com](mailto:atchmont@atchmontgear.com)

